

**RUUKKI
FINNERA**



Technische Daten

Name : Finnera (TS52-330-1140)

Deckbreite: 1140 mm

Modulbreite: 1190 mm

Profilhöhe: 52 mm

Decklänge: 660 mm

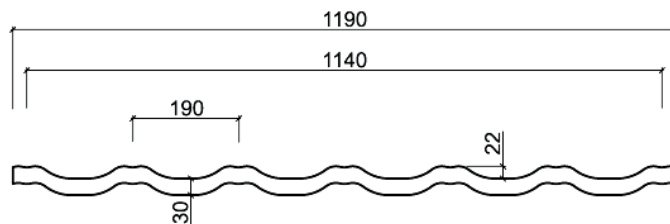
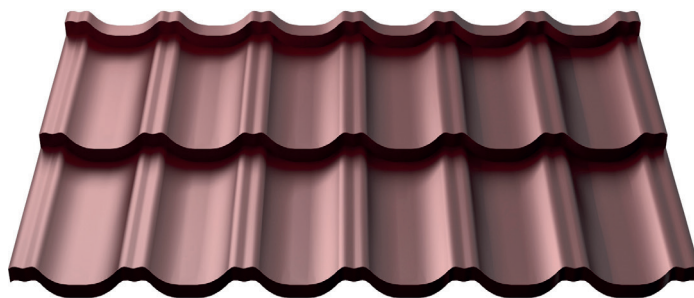
Modullänge: 705 mm

Ziegellänge: 330 mm

Stahldicke: 0,50 mm – 5 kg/m²

Minstdachneigung: 9°

Masse Zink: 275 g/m²



Farben



Schwarz
RAL 9017 / RR 33



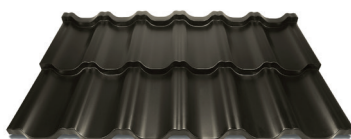
Anthrazit
RAL 7021 / RR 2H3



Grau
RAL 7024 / RR 23



Hellgrau
RAL 7045 / RR 22



Braun
RAL 6022 / RR 32



Terra-cotta
RAL 8004 / RR 750



Rot
RAL 3009 / RR 29



Schokoladenbraun
RAL 8017 / RR 887

Beschichtung

Ruukki 50 plus
Ruukki 40

GreenCoat Pural BT / Pural Matt BT
GreenCoat Crown BT

technische Garantie	ästhetische Garantie
50 jahre	25 jahre
40 jahre	15 jahre

Anti-Tropf

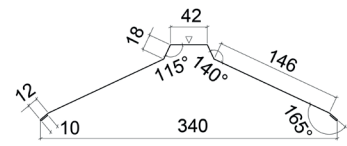
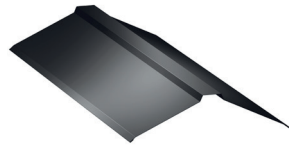
Vlies ist auf der Innenseite verklebt.

Flächengewicht: 110 g/m²

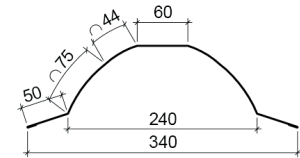
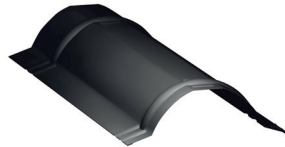
Mögliche Wasseraufnahme: > 600 g/m²

Zubehör

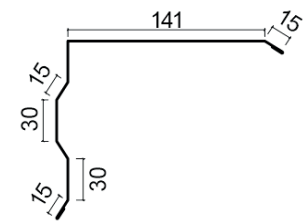
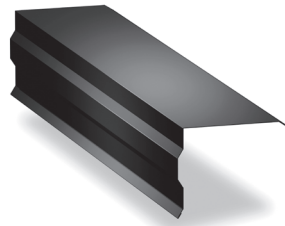
Firstkappe
2000 mm



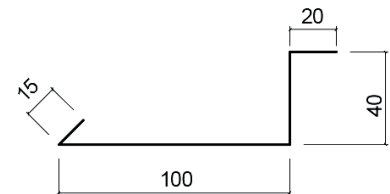
Firstkappe halbrund
2100 mm



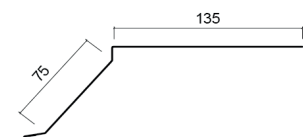
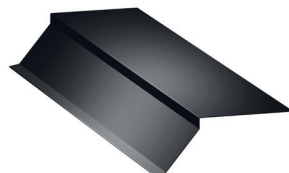
Ortgang
2000 mm



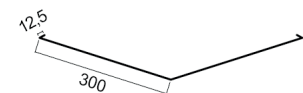
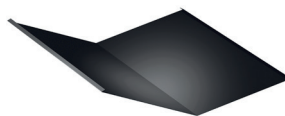
Ortgang unterteil
2000 mm



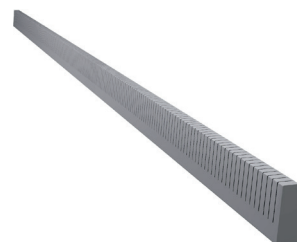
Traufblech
2000 mm



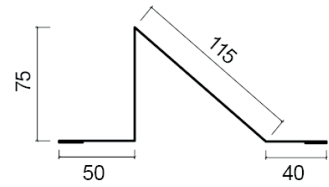
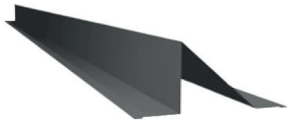
Kehle
2000 mm



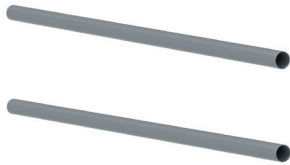
Universale Profildichtung
Größe max. : 10000 mm



Schneefang Blech
2000 mm



Schneefangrohr
2 Stück
1000 mm oder
3000 mm



Halter für
Schneefang



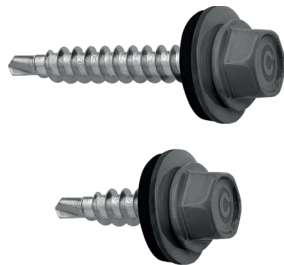
Shneestop



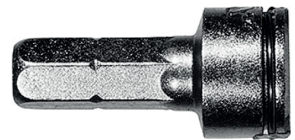
Retouchierfarbe



Lackierte
Schraube
• 4,8 x 35mm
• 4,8 x 20mm



Bit



Solarhalter

